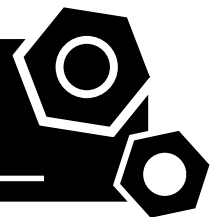


**DIESEL ENGINE DRIVEN  
STATIONARY AIR COMPRESSOR  
DR200-10**

**SPECIFICATIONS**



## 1 Standards & Conditions

### Design Standards

The designs and the productions are in conformity with:

- JB/T6430-2002
- JB/T3771-1992
- JB/T4223-2007
- GB/T15487
- ISO 1217
- ISO 2151
- ASME B 19.1-1990

### Environmental Operating Conditions

- Installation place: Outdoors or indoors (well ventilated).
- Ambient temperature: -25°C to 45°C. The coolant heater is needed when the temperature is below 5°C
- Humidity: Less than 80%.
- Altitude: Below one thousand (1000) meters.

### Factory Inspection

- Inspection items.
- Protection devices working test.
- Starting ability in normal temperature.
- 2 hours performance test of continuous full load.
- Performance test, including flux, pressure, temperature, noise, thermal balance etc.

### Painting Process

- Painting process specifications and colors are based on the manufacturer's standard.
- The customer could also choose the color which the manufacturer offers.

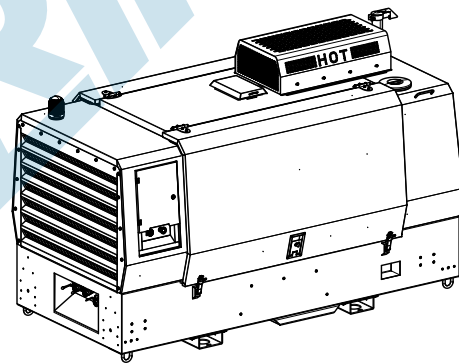
## 2 General Features

- POWERLINK diesel engine
- Oil-injection double-screw air compressor
- PLC controller with microprocessor technique
- Suction valve
- Solenoid valve
- Pressure regular valve
- Safety valve
- Minimum pressure valve
- Vent valve

- Shuttle valve
- Oil thermostatic valve
- 50°C radiator
- Lubricating oil radiator
- Double layer air filter
- Lubricating oil filter
- Vertical air/oil tank (ASME approval)
- Air/oil separator
- Emergency stop button
- Lockable battery isolator switch
- 1x12V/120AH sealed for life maintenance free battery
- Fuel tank for 12 hours running
- Powder coated canopy

## 3 Equipment Specification

### Air Compressor

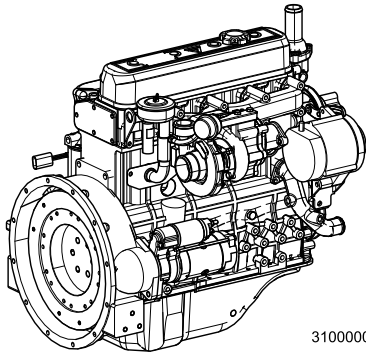


3000020313-AP1-B2

Model.....	DR200-10
Drive type .....	Diesel engine driven
Speed under full load.....	2500rpm
Rated flux .....	178cfm(5.025m <sup>3</sup> /min)
Rated discharge pressure .....	10.0bar
Discharge port .....	2xG3/4"+1xG1"
Total capacity of oil system.....	25L
Lubricating oil type.....	Synthetic oil
Total capacity of coolant system.....	14L
Fuel tank capacity.....	150L
Dry weight.....	1557.5kg
Dimensions L×W×H.....	2583x1357x1715mm

Note: all pressures in the manual are relative values (compared with atmospheric pressure)

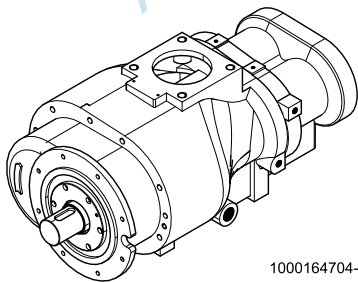
## Diesel Engine



3100000151-AP1-A8

Engine Manufacturer/Brand.....	POWERLINK
Engine Model.....	4DT3.2C-C75
Dimensions L×W×H.....	696×541×700.5mm
Dry Weigh (approx.).....	260Kg
Number of Cylinders.....	4
Bore.....	98mm
Stroke.....	105mm
Displacement.....	3.168L
Compression Ratio.....	18.5
Type of injection.....	Direct injection
Intake System.....	Natural aspirated
Intake Resistance.....	N/A
Cooling System.....	Water cooled
Fan.....	Pusher
Battery Voltage.....	12V
Type of Fuel.....	No.2-ASTM D975
Type of Oil.....	API CD/SE or CCMCD4
Oil Capacity.....	6L
Type of Coolant.....	Glycol mixture
Back Pressure.....	≤10.1kPa
Standby Power.....	N/A
Continuous Power.....	55kW
Fuel Consumption(100%load).....	12.7L/H

## Compressor

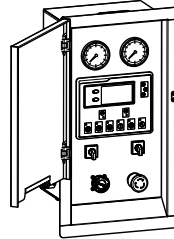


1000164704-AP1-A3

Structure.....	Oil-injection double-screw
Shaft power.....	38.4kW
Suction temperature.....	0-40°C
Working pressure.....	≤10.0bar

Rated speed.....	4194rpm
Speed ratio.....	1.67
Weight.....	160kg

## Control Cabinet



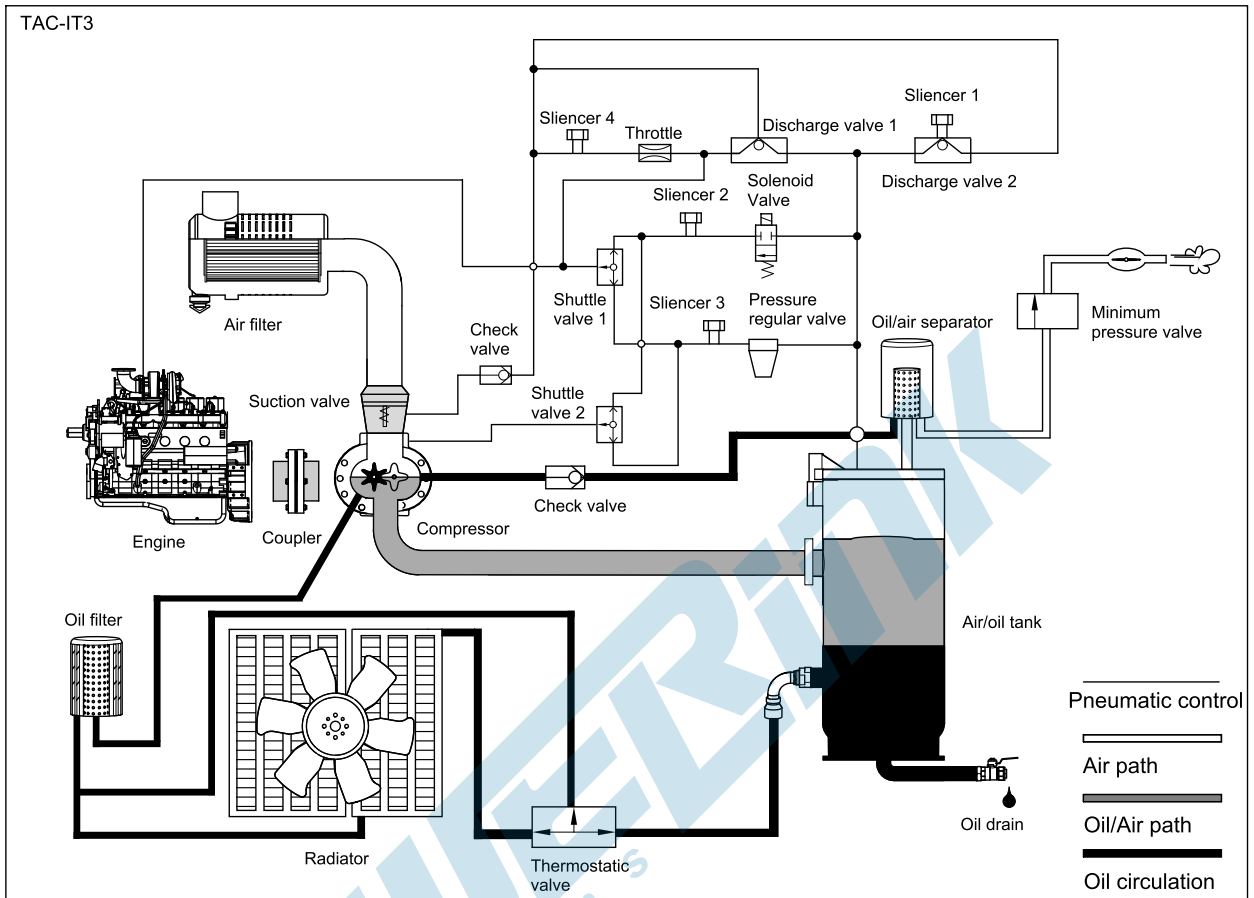
3100005004-AP1-F4

PLC of the machine is an advanced control module based on microprocessor for the automatic control and monitor system of the air compressor, realizing auto start/stop, data measure and alarm protection function. During running the module can accurately measure various parameters, like engine oil pressure, coolant temperature, discharge temperature and pressure etc. and display real values on LCD. When there is any fault, the control module alarms or stops the engine automatically and displays alarm information on LCD.

- Microprocessor control, with high stability and credibility
- Monitoring and measuring operational parameters of the air compressor
- Indicating operation status, fault conditions, all parameters and alarms
- Multiple protections; multiple parameters display, like engine oil pressure, discharge temperature and pressure etc.
- Manual and remote work mode selectable
- Real time clock for time and date display, overall runtime display
- Many configurable parameters from control panel

Warning Item	Shutdown Item
High discharge temperature	Emergency stop
High discharge pressure	Failure to start
High coolant temperature	High discharge temperature
Low engine oil pressure	High discharge pressure
Low fuel level	High coolant temperature
Low coolant level	Low engine oil pressure
Ail filter clogged	Low fuel level
Failure to stop	Low coolant level
Battery charge failure	Ail filter clogged
Low battery voltage	
High battery voltage	

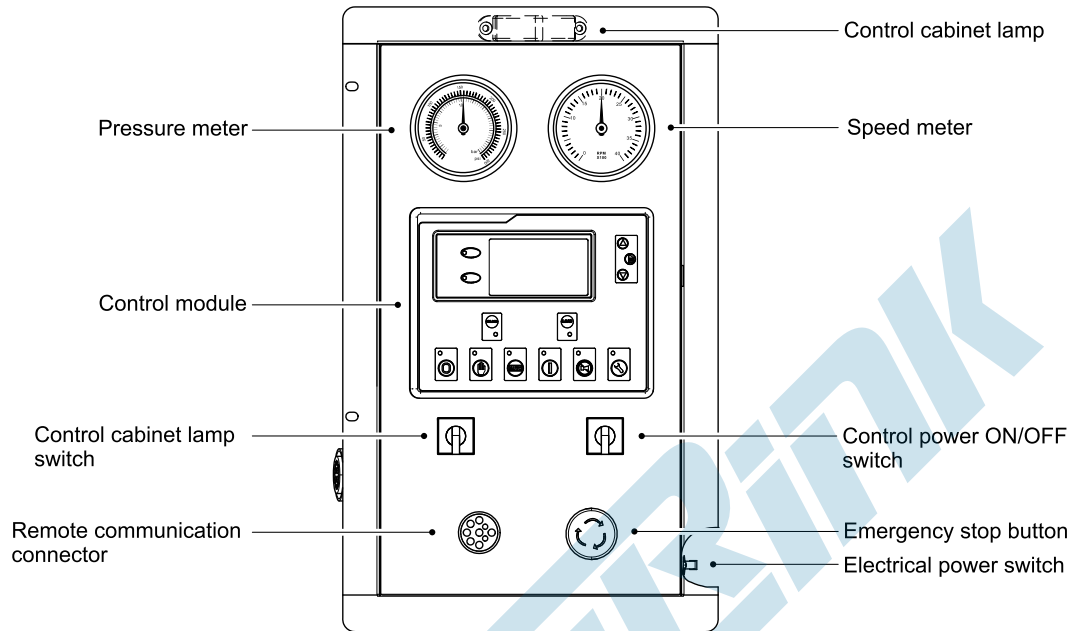
## 4 Air and Oil Path System



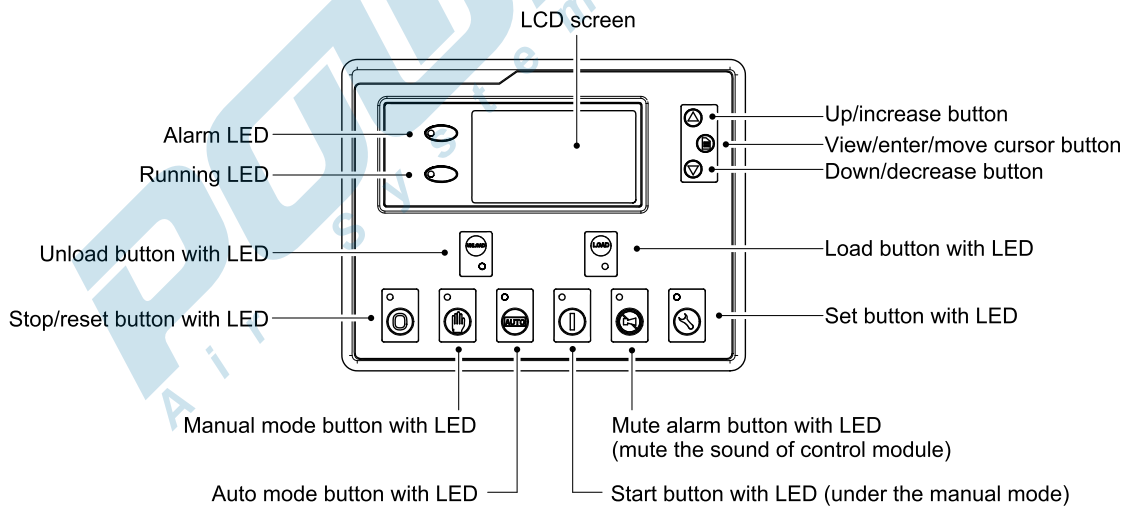
- Suction Valve
  - Control mode ..... Direct proportion
  - Working pressure .....  $\leq 10.0\text{bar}$
- Pressure Regular Valve
  - Working pressure .....  $10.0\text{bar}$
  - Pressure setting mode ..... Manual
- Minimum Pressure Valve
  - Activation pressure .....  $5.0\text{bar}$
  - Fully opened pressure .....  $5.0-5.5\text{bar}$
- Thermostatic Valve
  - Activation temperature .....  $85^\circ\text{C}$
  - Fully opened temperature .....  $100^\circ\text{C}$
- Air/oil Tank
  - Working pressure .....  $\leq 10.0\text{bar}$
  - Activation pressure of safety valve .....  $11.0\text{bar}$
- Air/oil Separator
  - Working pressure .....  $\leq 10.0\text{bar}$
  - Oil residue ratio (approx.) .....  $\leq 3\text{ppm}$

## 5 Control System

### Control Cabinet



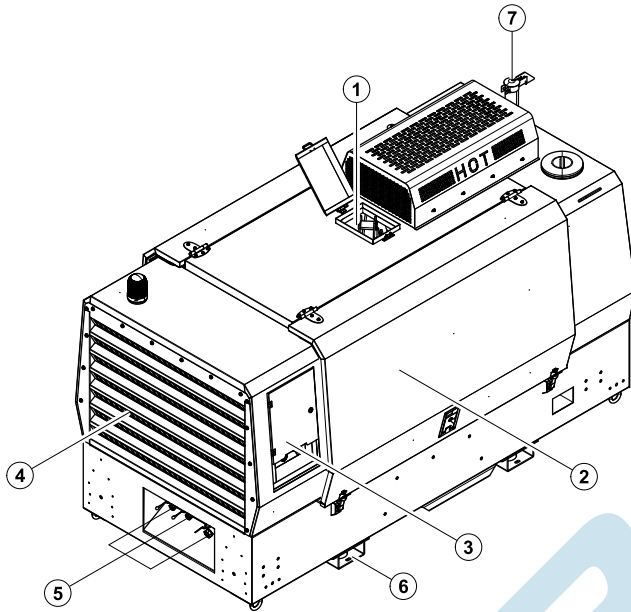
### Control Module



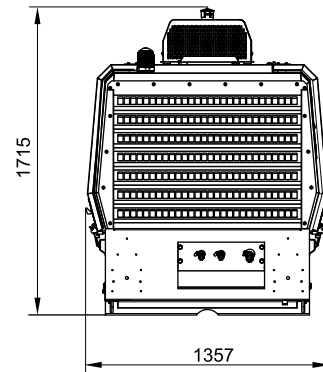
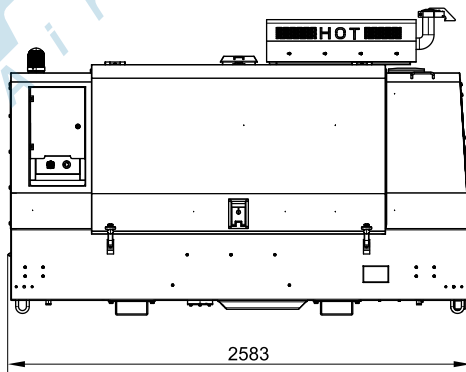
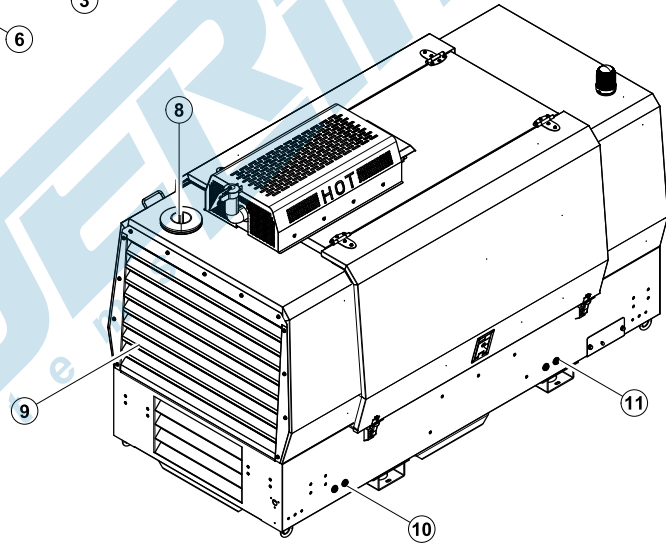
## 6 Overall Dimensions

3000020313-DR1-B2

Dry weight	1557.5kg
Dimensions	2583x1357x1715mm



- ⑪ Oil drain outlet
- ⑩ Waste water/ diesel drain outlet
- ⑨ Hot air outlet
- ⑧ Coolant inlet
- ⑦ Exhaust gas pipe
- ⑥ Fork lift channel
- ⑤ Discharge ball valve
- ④ Cooling air inlet
- ③ Control cabinet
- ② Access door
- ① Lifting lug

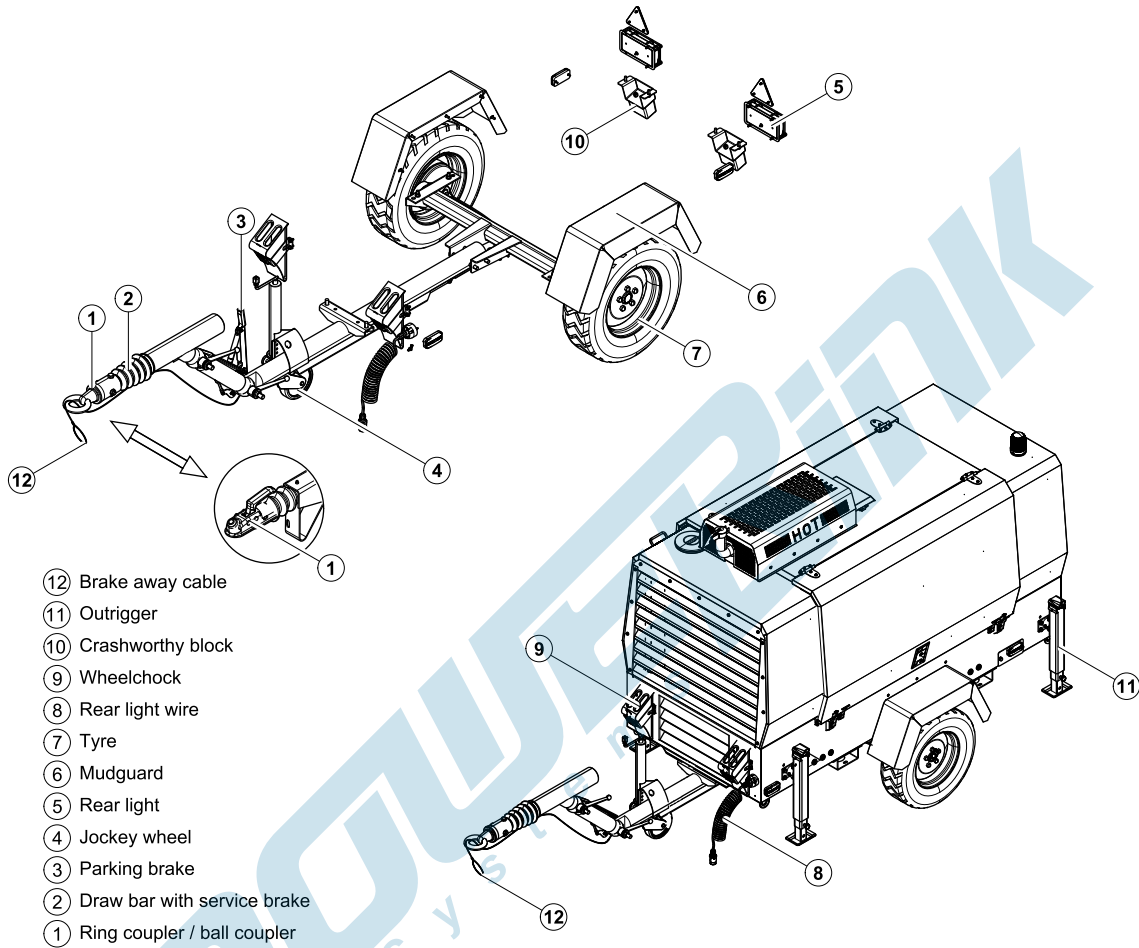


## 7 Optional Trailer

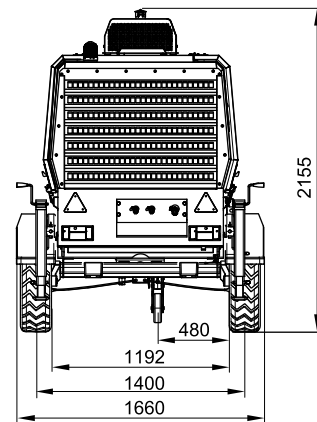
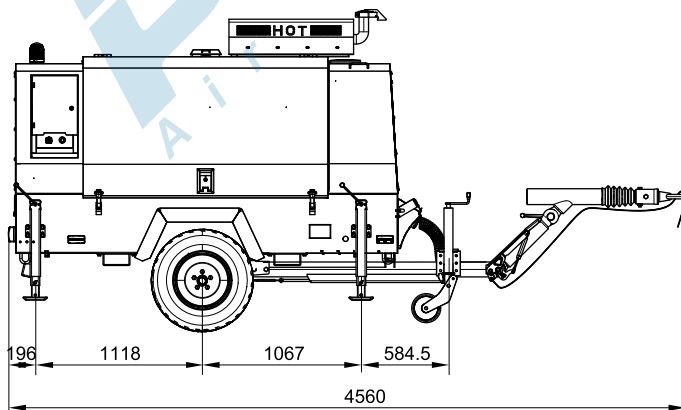
3000020313-DR3-B2

### HIGHWAY TYPE TRAILER

Dry weight of the whole	1874kg
Towing speed	≤ 80km/h
Tyre size	195R14
Dimensions of the whole	4560x1660x2155mm



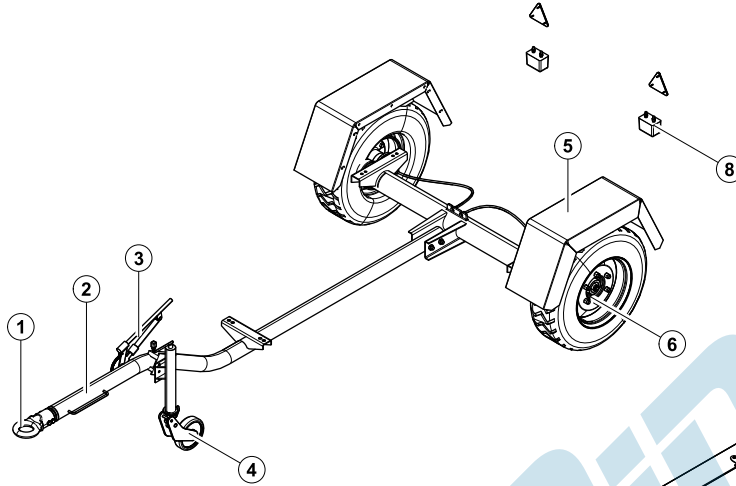
- ⑫ Brake away cable
- ⑪ Outrigger
- ⑩ Crashworthy block
- ⑨ Wheelchock
- ⑧ Rear light wire
- ⑦ Tyre
- ⑥ Mudguard
- ⑤ Rear light
- ④ Jockey wheel
- ③ Parking brake
- ② Draw bar with service brake
- ① Ring coupler / ball coupler



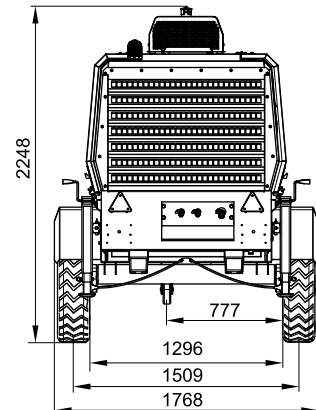
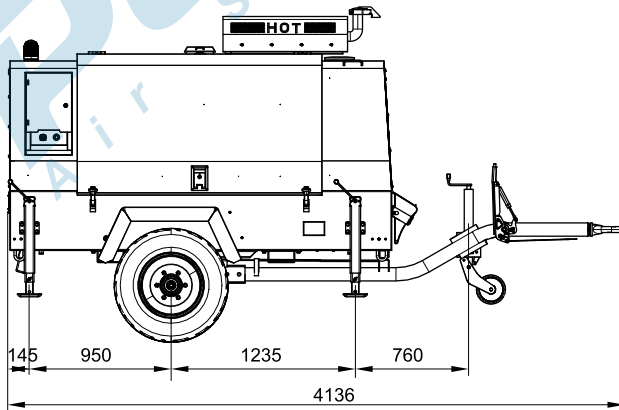
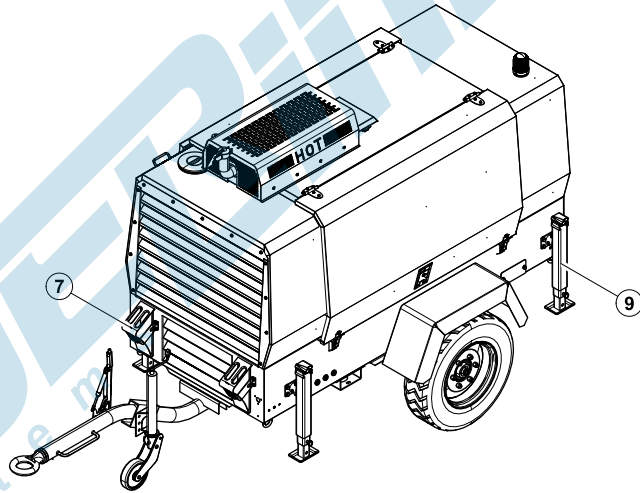
300020313-DR5-B2

**NON-HIGHWAY TYPE TRAILER**

Dry weight of the whole	1870kg
Towing speed	≤ 20km/h
Tyre size	215/75 R17.5
Dimensions of the whole	4136x1768x2248mm



- ⑨ Outrigger
- ⑧ Crashworthy block
- ⑦ Wheelchock
- ⑥ Tyre
- ⑤ Mudguard
- ④ Jockey wheel
- ③ Parking brake
- ② Draw bar
- ① Ring coupler



3000020313-B2-E
-----------------

08.2012
---------

**POWERLINK**  
Air Systems

<http://www.powerlinkworld.com>

*Specification may change without prior notice. For more info.,  
contact Power Link or your local distributors please.*